

Long Sleeve Shirts-Men&Women



91424 CH580 Chestnut Hill Men's Performance Plus Oxford

Premium DuPont Teflon - treated 100% combed cotton Oxford of 40 singles warp (vertical) yarns and 32 doubles weft (horizontal) yarns. Repels wrinkles, stains, and spills. Rolled button-down collar, pearlized buttons, locker loop, adjustable cuffs, center back pleat. Imported. Colors: Light Blue, Maize, White, French Blue, Light Lavender, Terracotta, Pine

Sizes: S, M, L, XL, 2XL, 3XL, 4XL S-XL \$28.62 2XL \$30.74 3XL \$32.86



20442 6240 Anvil Long Sleeve Cotton Pique Sport Shirt

6240 long sleeve cotton pique sport shirt. 6.8 oz., 100% extra heavyweight preshrunk cotton sport shirt (heather grey is 90/10 cotton/poly). Taped fashion-knit contoured collar and ribbed cuffs. Quarter-turned. Three-button clean-finished placket with high-gloss wood-tone buttons and 1/4" reinforced box. Double-needle stitched hemmed bottom. adult. M,L,XL,2XL Colors: white, heather grey, black, ivy, cobblestone, navy. 3XL available in white, heather grey, black, navy.

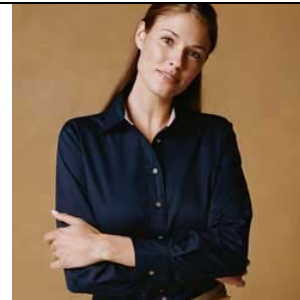
Sizes: MD, LG, XLG, 2XL, 3XL S-XL \$20.22 2XL \$22.47 3XL \$23.60



M500 Harriton Men's Long Sleeve Twill With Stain Release

55/45 cotton/poly twill wovens with stain release. Wrinkle resistant. Pearlized buttons with "Harriton" logo. Extra stitching for strength at seams and buttons. Flat felled seam finishing. Full back yoke and back pleat.

Sizes: S, M, L, XL, 2XL, 3XL, 4XL S-XL \$23.32 2XL \$25.44 3XL \$27.56



M500W Harriton Women's Long Sleeve Twill With Stain Release

55/45 cotton/poly twill wovens with stain release. Wrinkle resistant. Pearlized buttons with "Harriton" logo. Extra stitching for strength at seams and buttons. Flat felled seam finishing. Darts and princess seams.

Sizes: S, M, L, XL, 2XL S-XL \$23.32 2XL \$25.44



M550 Harriton Men's Long Sleeve Denim

6.5 oz., 100% cotton indigo denim shirts. Signature horn-style buttons with "Harriton " logo and contrast gold thread. Signature twill tape at neck. Fully constructed front placket. Inside flat felled seams. Elegant khaki double-needle topstitching.

Sizes: S, M, L, XL, 2XL, 3XL, 4XL **S-XL \$19.66 2XL \$21.91 3XL \$23.03**



M550W Harriton Women's Long Sleeve Denim

6.5 oz., 100% cotton indigo denim shirts. Signature horn-style buttons with "Harriton " logo and contrast gold thread. Signature twill tape at neck. Fully constructed front placket. Inside flat felled seams. Elegant khaki double-needle topstitching.

Sizes: S, M, L, XL, 2XL **S-XL \$19.66 2XL \$21.91**



01756 5201A VF Imagewear Lee 5201 Ladies' Stretch Denim Shirt

6.5 oz., 98% ringspun cotton/2% Spandex denim shirt with spread collar. 3/4-length sleeves with deep vents. Concealed placket with DTM pearlized buttons. Smooth contouring front and back darts. Fully single-needle top-stitched.

Sizes: SM, MD, LG, XLG **S-XL \$31.80**



20760 1484 Anvil Women's Ringspun Cotton Long Sleeve Color-block Ribbed Baseball Tee

1484 ANVIL women's ringspun cotton long sleeve color-block ribbed baseball tee 6 oz., 100% heavyweight preshrunk tee (Heather Grey is 90/10 cotton/poly). Bound matching trim on neck and raglan sleeves. Side seamed. Fitted silhouette. Women. Colors: white/frost sky, white/frost pink, white/black, heather/black S, M, L **\$ 14.16**

Short Sleeve Shirts-Men



65462 166762 Nike Golf Dri-fit Jersey-knit Sport Shirt For Men

166762 Nike golf Dri-FIT jersey-knit sport shirt 5oz., 60/40 cotton/ poly sport shirt with hemmed cuffs and bottom. Swoosh design trademark embroidered on lower left sleeve. Dri-Fit trademark tab at lower left seam. Men Tipped welt collar. 3-button placket with coordinating buttons embossed ""Nike Golf"". XS and 4XL Colors: Orange Ice, White, Clay Green, Lake Blue, Dark Navy, Smoke Heather, Black S,M,L,XL,2XL,*3XL

Sizes: XS, SM, MD, LG, XLG, 2XL, 3XL, 4xl **S-XL \$39.22**
2XL \$41.34 3XL \$43.46



91414 CH320 Chestnut Hill Men's Olympia Dri-Fast Honeycomb Mesh Polo

Mesh fabric with 32 singles 73% cotton outside, 75-denier 27% polyester inside for a cool, dry, permanent performance. 165 grams per square meter. Contrasting piped raglan seams. Inside neck tape matches tipping on collar. Bar-tacked side vents. Imported. Colors: White/New Navy, Stone/New Navy, Red/White, New Navy/White, Maize/New Navy

Sizes: S, M, L, XL, 2XL, 3XL, 4XL **S-XL \$27.56 2XL \$29.68**
3XL \$31.80



65456 193579 Nike Golf Piped Dri-fit Pique Sport Shirt

193579 Nike golf piped Dri-FIT pique sport shirt. 5 oz., 63/37 cotton/poly sport shirt with piping. 3-button placket with coordinating buttons embossed with "Nike Golf". Tipped welt collar, hemmed sleeves and side seams. Swoosh trademark design embroidered on lower left sleeve. Adult Colors: White/Dark Navy, Chino/Dark Navy, Clay Green/Dark Navy, Dark Navy/Chino S, M, L, XL, 2XL, 3XL

Sizes: S, M, L, XL, 2XL, 3XL **S-XL \$41.34 2XL \$43.46**
3XL \$45.58



79485 PE384 Perry Ellis Short Sleeve Cotton Oxford

PE384 Perry Ellis short sleeve cotton oxford. 100% cotton oxford pique. Half moon patch. Three-button placket with Perry Ellis embossed buttons. Top-stitched shoulders and armholes. Signature pleat on sleeves. Double-needle stitched hemmed cuffs and bottom. Perry Ellis logo embroidered on right sleeve.adult Colors: Persimmon, Vista Blue, Khaki, Seamist S, M, L, XL, 2XL, 3XL **S-XL \$29.68 2XL \$31.80 3XL \$33.92**



35497 13Z0029 Izod Men's Cotton Interlock Sport Shirt

13Z0029 IZOD men's cotton interlock sport shirt. 6 oz., 100% cotton sport shirt with welt collar and cuffs. Embroidered tone-on-tone Izod logo on lower right sleeve. Two-button placket with pearlized buttons embossed "Izod". Side seamed. Double-needle stitched hemmed bottom with side vents and dropped tail. Colors: white, sunburst, blue wave, real red, midnight, black. M, L, XL, 2XL, 3XL.

Sizes: MD, LG, XLG, 2XL, 3XL S-XL \$25.44 2XL \$27.56 3XL \$29.68



M500S Harriton Men's Short Sleeve Twill With Stain Release

55/45 cotton/poly twill wovens with stain release. Wrinkle resistant. Pearlized buttons with "Harriton " logo. Extra stitching for strength at seams and buttons. Flat felled seam finishing. Full back yoke and back pleat.

Sizes: S, M, L, XL, 2XL, 3XL, 4XL S-XL \$24.55 2XL \$26.80 3XL \$27.92



M550S Harriton Men's Short Sleeve Denim

6.5 oz., 100% cotton indigo denim shirts. Signature horn-style buttons with "Harriton " logo and contrast gold thread. Signature twill tape at neck. Fully constructed front placket. Inside flat felled seams. Elegant khaki double-needle topstitching.

Sizes: S, M, L, XL, 2XL, 3XL, 4XL S-XL \$19.38 2XL \$21.63 3XL \$22.75



30425 623 Jonathan Corey Performance Brushed Twill Short Sleeve Shirt Men

167 JONATHAN COREY performance brushed twill short sleeve shirt 60/40 cotton/poly brushed twill short sleeve with button-down collar. Wood-tone buttons. Reinforced shoulders and armholes. 623 men Left chest pocket. Colors: white, yellow, khaki, french blue, red, royal, burgundy, hunter, navy, black XS, S, M, L, XL, 2XL, 3XL, 4XL

Sizes: XS, SM, MD, LG, XLG, 2XL, 3XL, 4XL S-XL \$24.38 2XL \$26.50 3XL \$28.62

Ladies Shirts



91724 CH580W Chestnut Hill Women's Performance Plus Oxford

Premium DuPont Teflon - treated 100% combed cotton Oxford of 40 singles warp (vertical) yarns and 32 doubles weft (horizontal) yarns. Repels wrinkles, stains, and spills. Front and back darts for a flattering fit. Pearlized buttons. Imported. Colors: Light Blue, Fresh Pink, Maize, Creamsicle, White, French Blue, Light Lavender

Sizes: S, M, L, XL, 2XL **S-XL \$28.62 2XL \$30.74**



65757 297997 Nike Golf Dri-fit Jersey-knit Sport Shirt For Women

297997 Nike golf Dri-FIT jersey-knit sport shirt 5 oz., 60/40 cotton/poly sport shirt with hemmed cuffs and bottom. Swoosh design trademark embroidered on lower left sleeve. Dri-FIT trademark tab at lower left seam. Tailored fit, keyhole placket and tipped collar. Colors: Dark Navy, White, Ice Green, Black S, M, L, XL, 2XL

Sizes: S, M, L, XL, 2XL **S-XL \$41.34 2XL \$43.46**



65756 297996 Nike Golf Ladies' Dri-fit Pique Sport Shirt

297996 Nike Golf ladies' Dri-FIT pique sport shirt 6 oz., 62% cotton/35% polyester/3% spandex Dri-FIT pique sport shirt with johnny collar and welt collar and hemmed sleeves. Slimming seaming details on front and back. Swoosh trademark design embroidered on lower left sleeve. Dri-FIT trademark tab at lower left side seam. women Colors: White, Orange Ice, Pro Red, Ice Blue, Dark Navy, Black S, M, L, XL, 2XL

Sizes: S, M, L, XL, 2XL **S-XL \$39.22 2XL \$41.34**



73765 DW605 Desert Wash 2x1 Ribbed Scoop Neck Tank Women

DW605 Desert Wash 2x1 ribbed scoop neck tank women. 5.8 oz., 100% ringspun vivid-dyed cotton 2x1 ribbed tank top. Scoop front and back. Double-needle stitching at neck, armholes and bottom. Available in Raven, Pool, Chuparosa, Sunset, Palo Verde, Cloud. S,M,L,XL.

Sizes: S, M, L, XL **S-XL \$12.92**



35797 1294 Izod Women's Cotton Interlock Sport Shirt

1294 IZOD women's cotton interlock sport shirt. 7 oz., 100% combed cotton sport shirt with eyelet tipped collar and cuffs. Embroidered tone-on-tone Izod logo on lower right sleeve. Three-button reversed placket with wood-tone buttons embossed "Izod". Double-needle stitched hemmed bottom with side vents and dropped tail. Colors: white, sunburst, blue wave, black. S, M, L, XL.

Sizes: SM, MD, LG, XLG **S-XL \$25.44**



09561 BB9561 Luna Pier Reversible Fleece-lined Pants

BB9561 LUNA PIER reversible fleece-lined pants 100% nylon pants with two white vertical stripes down legs. Side-seam pockets. Reversible to 7.5 oz., 70/30 poly/cotton grey heather fleece. Elastic waistband with drawcord. Elastic ankle cuffs with 7" side zippers. adult. Colors: black/white, royal/white, navy/white S, M, L, XL, 2XL, 3XL

Sizes: SM, MD, LG, XLG, 2XL, 3XL **S-XI \$21.91 2XL \$24.16 3XL \$25.28**



09516 BB9516 Luna Pier Reversible Fleece-lined Jacket With Hood

BB9516 LUNA PIER coach jacket 100% nylon jacket with full front snap closure. Water-resistant shell with Taslan cotton lining. Raglan sleeves. Elastic cuffs. Welt pockets at waist. Adjustable drawcord bottom with cordlocks. adult. Colors: black/white, royal/white, navy/white S, M, L, XL, 2XL, 3XL

Sizes: SM, MD, LG, XLG, 2XL, 3XL **S-XL \$26.50 2XL \$28.62 3XL \$30.74**

Sweat Shirts



91132 CH910 Chestnut Hill Unisex Microfleece Quarter-Zip Pullover

Premium 150-denier/288-filamnet microfiber polyester, 280 grams per square meter. Elasticized drawcord on inside hem and black accent tipping. Imported. Colors: Cactus, Merlot, Silver Grey, New Navy, Surplus, Black, Sienna, True Royal

Sizes: XS, S, M, L, XL, 2XL, 3XL, 4XL **S-XL \$29.68 2XL \$31.80 3XL \$33.92**



04155 16230R Best By Fruit Of The Loom /16230br 8 Oz. 50/50 Full-zip Hooded Sweatshirt

8 oz. 50/50 two-end hooded sweatshirt with full-front zipper. Single-ply hood with matching drawcord. Double-needle cover-stitched hood, armholes, pockets and bottom. Pouch pockets. Ribbed cuffs and bottom. Colors: Heather, Black, Navy

Sizes: SM, MD, LG, XLG, 2XL **S-XI \$21.35 2XL \$23.60**



04153 16130 Best By Fruit Of The Loom Hooded Pullover

16130 BEST BY FRUIT OF THE LOOM hooded pullover. 8 oz., 50/50 cotton/poly hooded pullover with front pouch pocket. Two-ply hood with matching tipped drawcord and metal grommets. Ribbed cuffs and waistband. Double-needle coverstitched armholes and waistband. adult. Colors: white, ash, athletic heather, red, royal, navy, black S, M, L, XL, 2XL, 3XL

Sizes: SM, MD, LG, XLG, 2XL, 3XL **S-XL \$16.57 2XL \$18.82 3XL \$19.94**

Jackets



91131 CH900 Chestnut Hill Men's Microfleece Full-Zip Jacket

Premium 150-denier/288-filamnet microfiber polyester, 280 grams per square meter. Elasticized drawcord on inside hem and black accent tipping. Imported. Colors: Cactus, Merlot, Silver Grey, New Navy, Surplus, Black, Sienna, True Royal

Sizes: XS, S, M, L, XL, 2XL, 3XL, 4XL S-XL \$33.92 2XL \$36.04 3XL \$38.16



91540 CH700 Chestnut Hill Unisex Capstone Jacket

Wear it in comfort three seasons out of four. Water-repellent, wind-resistant shell of 100% polyester microfleece lining. Inconspicuzip feature allows easy access for embroidering. Hand-warmer pockets behind zippered security and cell phone pocket. Black spandex binding on cuffs and hem. Imported. Colors: New Navy/Charcoal, Olive/Stone, Black/Charcoal, Espresso/Charcoal, Stone/Espresso, Merlot/Charcoal

Sizes: XS, S, M, L, XL, 2XL, 3XL, 4XL S-XL \$47.90 2XL \$49.82 3XL \$51.94



505050 WP6105 MV Sport Weatherproof Microfiber Wind Shirt With Zip Off Sleeves

WP6105 Weatherproof microfiber wind shirt with zip off sleeves. 100% polyester quarter zip pullover wind shirt that's five-times sand washed, making it the softest microfiber available. Wind and water repellent. Breathable mesh liner, inner collar and underarm detail. Sleeves zip off to convert to a short sleeve wind shirt. Elastic waist and cuffs. adult Colors: Navy, Olive, Stone, Black S, M, L, XL, 2XL

Sizes: S, M, L, XL, 2XL S-XL \$37.10 2XL \$39.22



65565 193590 Nike Golf Therma-fit Jacket

193590 Nike golf Therma-FIT jacket. 5 oz., 100% polyester full-zip Therma-FIT jacket with contrast color inside neck. Side elastic and forward welt pockets. Swoosh trademark design embroidered on upper left sleeve. Adult Clay Green/Dark Navy, Birch/Dark Navy, Dark Navy/Birch S, M, L, XL, 2XL, 3XL

Sizes: S, M, L, XL, 2XL, 3XL S-XL \$58.30 2XL \$60.42 3XL \$62.54



14740 GR200 Great Republic Agent Jacket

GR200 Agent jacket. Soft French Terry fabric with contrasting striped rib inserts on sleeves. Front zipper with ring pull plus full neck for comfortable warmth. Colors: summer navy/white, light pink/white, coffee/vanilla, sky/white sizes: S,M,L,XL

Sizes: S, M, L, XL **S-XL \$32.58**



09544 BB9544 Luna Pier Clubhouse Jacket

BB9544 LUNA PIER clubhouse jacket 65/35 poly/cotton poplin jacket with mesh and taffeta lining. Contrasting inside collar and placket. Full front zipper and chin guard. Elasticized cuffs with adjustable hook and loop closure. Two covered side-zip pockets. Hidden embroidery zipper at left chest. Inside cell phone pocket. Back vent access. adult. Colors: Black/royal, khaki/navy, navy/khaki. M, L, XL, 2XL, 3XL

Sizes: MD, LG, XLG, 2XL, 3XL **S-XL \$45.58 2XL \$47.90 3XL \$49.82**

Tee-Shirts



GD220 YOUTH Heavyweight Cotton T-Shirt

5.4 oz., 100% cotton preshrunk jersey (Ash: 99% cotton /1% polyester; Sport Grey: 90% cotton/10% polyester), seamless double needle collar, taped neck and shoulders, double needle sleeve and bottom hem, quarter-turned to eliminate center crease

Colors: Ash 95, Black 36, LT. Blue 42, Lime J8, Navy 32, Red 40, Royal 51, Sport Grey 98, White 90
Sizes XS-LG

\$7.54 includes two color, one side screen print



GD201 POCKET Ultra Cotton T-Shirt

6.1 oz., 100% cotton preshrunk jersey (Ash: 99% cotton 1% polyester; Sport Grey: 90% cotton 10% polyester), double-needle seamless collar, taped neck and shoulders, double-needle sleeve and bottom hem, double-needle 5 point pocket, quarter-turned to eliminate center crease

Colors: Ash 95, Black 36, LT. Blue 42, Natural 59, Navy 32, Red 40, Royal 51, Sport Grey 98, White 90, Forrest 38, Gold 41, Orange 44
Sizes XS-LG

\$8.70 includes 2 color, One sided print

Caps & Duffle Bags



EZ586 Low-Profile Garment Washed Twill Sandwich Cap
 100% cotton garment washed twill, low-profile 6 panel, unstructured, self-fabric strap adjustment with embossed antique brass T-slide buckle, matching sewn eyelets and top button, pre-formed bill with contrasting color sandwich and matching fabric under visor
 Colors: **Black/khaki 36, Black/orange BO, Black/putty BP, Black/red BR, Mustard/navy 31, Navy/khaki 32, Putty/black**
\$12.47 Includes Star Logo Embroidered



T07406-Pack Cooler
 600-Denier polyester, leak proof, front zippered pocket, shoulder strap, black trim, approximate imprint area 5 1/2" x 3 1/2" approximate embroidery area 3 1/4" diameter
 Colors: **Black 36, Red 40, Royal 51**
\$14.45 Includes Star Logo Embroidered



BE015 Baggage Large Sport Duffel.
 Features: 600-denier polyester, Large main compartment with U-shaped zipper opening; zippered end pockets; front zippered pocket with interior accessory pockets and key fob; 2 front black mesh pockets; webbing handles; adjustable shoulder strap.
 Colors: **Black, Navy.**
Sizes: 23-1/2" x 12" x 10-1/2".
\$34.95 Plus Shipping & Tax Includes Star Logo Embroidered



BE004 Baggage Canvas Boat Tote.
 Features: 100% cotton, 12 oz. Self-contrasting handles and bottom.
 Colors: **Natural/Black, Natural/Forest, Natural/Light Blue, Natural/Lime, Natural/Navy, Natural/Pink, Natural/Red, Natural/Royal, Navy/Gold, Red/Black, Augusta Green/Navy.**
Sizes: 18-1/2" x 13-1/2" x 5-1/2"
\$14.60 Plus Shipping & Tax, Includes Star Logo Embroidered